

# INSPECTION COVER REPLACEMENT KIT INSTRUCTIONS

## K SERIES BOILER - KIT 550004386

**Affected Model Numbers:**

| Utica Boilers | Dunkirk Boilers | Pennco   | Columbia | Utica Heating | Green Mountain |
|---------------|-----------------|----------|----------|---------------|----------------|
| MGB-060K      | DXL-060K        | 15B-060K | MCB-060K | UH15B-060K    | GMGW-060K      |
| MGB-095K      | DXL-095K        | 15B-095K | MCB-095K | UH15B-095K    | GMGW-095K      |
| MGB-120K      | DXL-120K        | 15B-120K | MCB-120K | UH15B-120K    | GMGW-120K      |
| MGB-150K      | DXL-150K        | 15B-150K | MCB-150K | UH15B-150K    | GMGW-150K      |
| MGB-175K      | DXL-175K        | 15B-175K | MCB-175K | UH15B-175K    | GMGW-175K      |
| MGB-205K      | DXL-205K        | 15B-205K | MCB-205K | UH15B-205K    | GMGW-205K      |
| MGB-235K      | DXL-235K        | 15B-235K | MCB-235K | UH15B-235K    | GMGW-235K      |

**Affected Serial Numbers:** 392201652S through 012303099S

**Kit installation shall be completed by qualified agency.**

**⚠ WARNING**

Fire, explosion, asphyxiation and electrical shock hazard. Improper installation could result in death or serious injury. Read this instruction and understand all requirements, including requirements of authority having jurisdiction, before beginning installation. Installation not complete until appliance operation verified per Installation, Operation & Maintenance Manual provided with boiler.

1. Follow instructions to TURN OFF GAS TO APPLIANCE found on Operating Instructions label on boiler or in Installation, Operation & Maintenance Manual.

**⚠ WARNING**

Electrical shock hazard. Turn OFF electrical power supply at service panel.

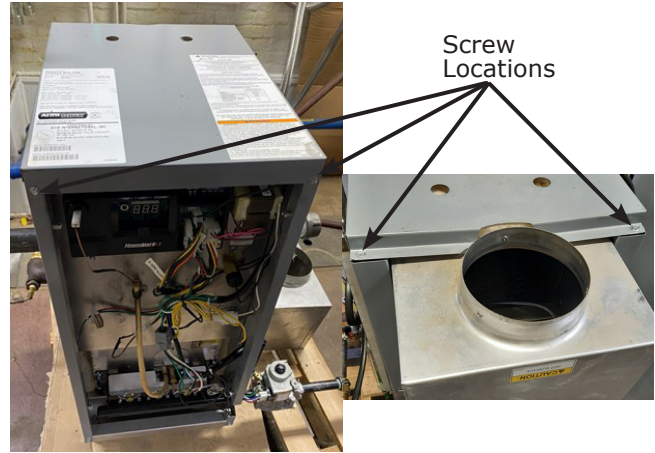
2. Turn off electrical power supply at service panel. Verify all electrical power to boiler is turned off.
3. Lift and remove front door.

**⚠ WARNING**

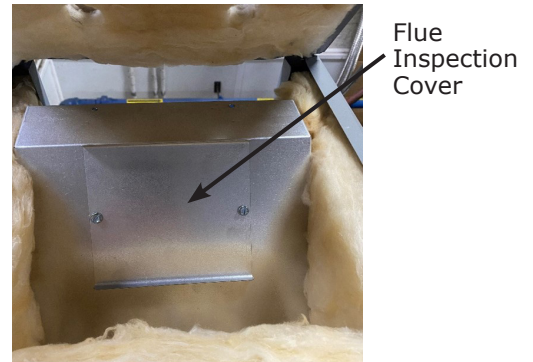
Burn hazard. Verify unit has cooled before servicing. Use appropriate personal protection equipment.

4. Remove 4 screws from Top Panel (See Figure 1).
5. Remove top panel.
6. Verify presence of inspection cover (Figure 2). If inspection cover is not present, install cover supplied with kit using two mounting screws.
7. Any moisture present in the insulation may be allowed to dry naturally.
8. Re-install top panel and screws.
9. Restore gas and electric to boiler. Verify proper operation.
10. See Figure 3 for location of model number and serial number. Record this information on recall card.
11. Complete remainder of recall card and return.

**Figure 1 - Boiler Front and Rear View**



**Figure 2 - Front Panel Removed**



**Figure 3 - Model and Serial Number Location**

